



JVA Perimeter Patrol™

User manual

Version: 5.3
Date: February 2017

The screenshot displays the JVA Perimeter Patrol Pro software interface. It features several windows and panels:

- JVA Event Log:** A table listing recent events with columns for Event ID, Time of First Occurrence, Username, Zone, Description, Time Muted, Muted By, Occurrences, and Time of Latest Occurrence.
- QuickView:** A panel showing the current status of the perimeter sectors.
- Site Map:** A 3D-style map of the facility with sectors labeled: North sector, East sector, South sector, and West sector.
- Please Authenticate [Local]:** A dialog box requiring user credentials to perform an action.

Event ID	Time of First Occurrence	Username	Zone	Description	Time Muted	Muted By	Occurrences	Time of Latest Occurrence
2597	5/03/2013 10:58 ...	Administr...	East se...	FENCE ALARM			3	5/03/2013 11:53 AM
2598	5/03/2013 10:58 ...	Administr...	East se...	UNDER VOLTAGE (Return)			2	5/03/2013 11:54 AM
2599	5/03/2013 10:58 ...	Administr...	East se...	UNDER VOLTAGE (Feed)			2	5/03/2013 11:54 AM
2626	5/03/2013 11:51 ...	Administr...	East se...	OVER VOLTAGE (Return)			1	
2627	5/03/2013 11:51 ...	Administr...	East se...	OVER VOLTAGE (Feed)			1	

Zone	kV
North sector	6.3
East sector	2.8
South sector (kV)	4.5
West sector	4.8

Tip: To move a zone label, hold down 'Shift' and drag the label to the required position.

HLI: 0 Clients | Coms: OK (1 Ethernet) Database: OK | ADMINISTRATOR:Administrator

Legend: Disarmed Armed Activated Alarmed

Getting Help

My company system administrator

Contact Person

Phone

Email

Other info

JVA Perimeter Patrol System Installer

Company Name

Contact Person

Phone

Email

Other info

JVA International

Website <http://www.jvasecurity.com>

Table of Contents

1 Introduction	2
2 JVA Perimeter Patrol Versions	3
3 Starting JVA Perimeter Patrol	4
4 Logging into Perimeter Patrol	4
4.1 Levels of user access	4
4.2 Login as a different user	5
5 JVA Perimeter Patrol display overview	6
6 Extended Zone Information	7
7 How to control the energisers	8
7.1 Control on Schedule	8
8 What to do when an alarm occurs	9
8.1 Muting alarms	9
8.2 Closing alarms	9
8.3 Alarm emails	10
9 Event Log Archive	11
10 The System Controller	12
11 The Relay Controller	13
12 View Fullscreen	14

1 Introduction

JVA Perimeter Patrol provides PC-based supervisory control and logging for JVA security electric fence energisers and monitoring systems. A powerful, flexible and intuitive user interface is provided over a stable industry standard database structure.

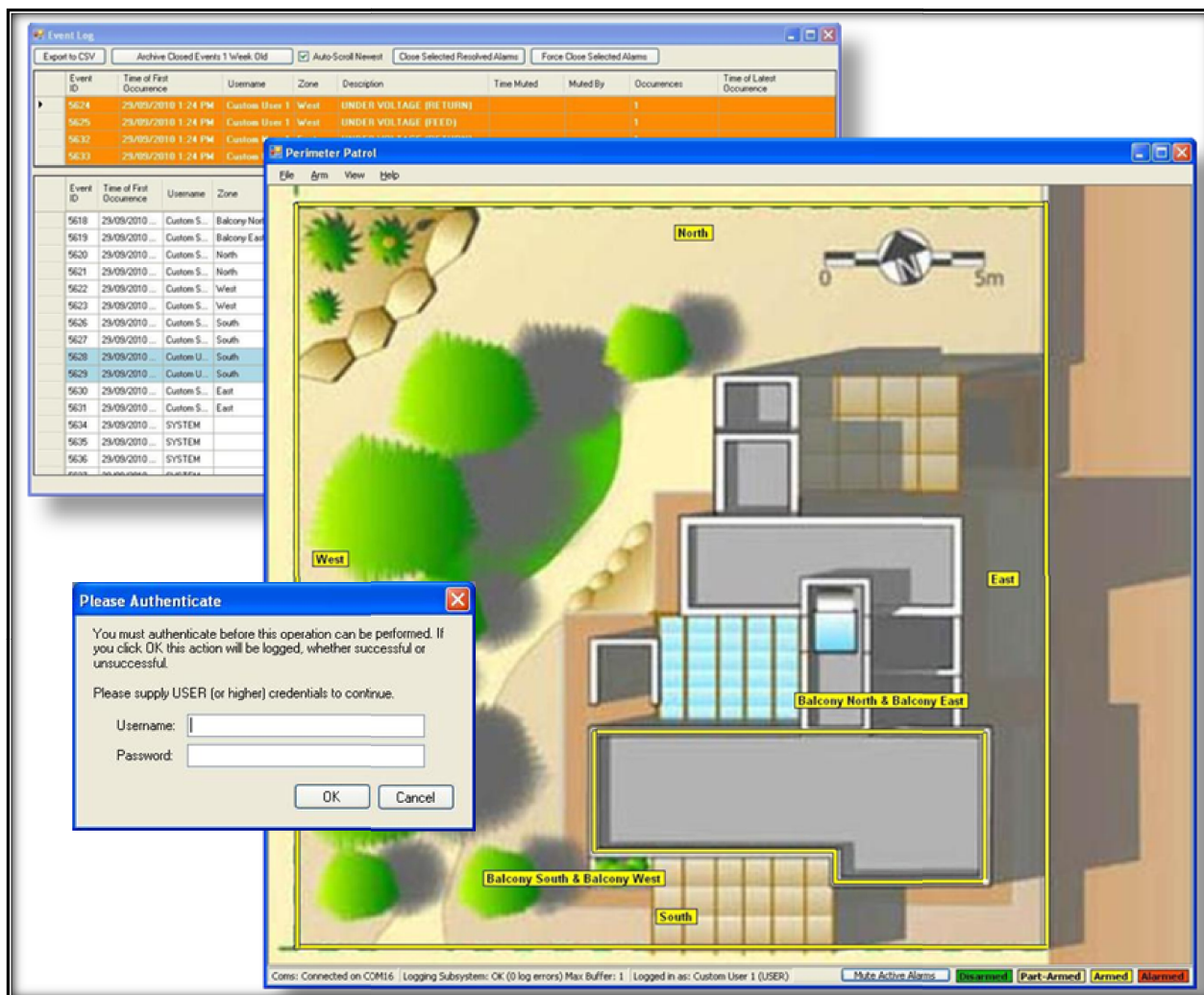


Figure 1 - Screenshots of JVA Perimeter Patrol

You can use password-protected JVA Perimeter Patrol to:

- Quickly view the status of your electric fences and devices
- Alert you and email you when the fences, gates or other devices need your attention
- Arm and disarm your electric fences according to your custom schedule
- Remotely access your electric fence system

You can also write custom software to access the JVA Perimeter Patrol API.

2 JVA Perimeter Patrol Versions

JVA Perimeter Patrol Features	Lite	Pro
View & Control Energiser Zones	✓	✓
View & Control Zone Monitors	✗	✓
Support Multiple Sectors Per Zone	✗	✓
Map-Oriented Zone Mimic Screen	✓	✓
Automatically Control on Schedule	✓	✓
Alarm Display and Sound	✓	✓
Email on Alarm	✓	✓
Serial Communication Mode	✓	✓
Ethernet (TCP/IP) Communication Mode	✗	✓
User Authentication	✗	✓
Full Screen Mode Preventing Access to Other Applications	✗	✓
Event Logging with Viewer and Automatic Archival	✗	✓
Administrator's Full System Controller	✗	✓

JVA Perimeter Patrol Specifications

Operating System	Microsoft Windows 7 / 8 / 10	
Logging Database	Microsoft SQL Server Compact Edition	
Communications Interface	TCP/IP or USB Serial Port	
Minimum CPU	Intel or compatible Pentium III 1 GHz or faster	
Minimum RAM	4GB	
Scheduled Control	Repeats	Weekly
	Granularity	30 Minutes
Email Support	SMTP, SSL, Authentication	
Maximum Number of Zones	Lite	4
	Demo (30 day trial)	20
	Professional	Up to 250 (limit depends on system configuration)
User Levels (not available in Lite)	User	View zone voltages and alarms
	Supervisor	<i>All User tasks above</i> Control energisers Close resolved alarms Exit Full Screen Mode
	Administrator	<i>All Supervisor tasks above</i> Modify System Configuration
Integration of Legacy Equipment	Via contact input and relay outputs	

3 Starting JVA Perimeter Patrol

You can start JVA Perimeter Patrol by double-clicking on its windows desktop icon.



Figure 2 - JVA Perimeter Patrol desktop icon

If you can't find the desktop icon, you can try looking in your computer's Start menu for it.

Click **Start** → **All Programs** → **JVA** → **JVA Perimeter Patrol**

4 Logging into Perimeter Patrol

Versions	Lite	x	Pro	✓
----------	------	---	-----	---

When JVA Perimeter Patrol starts, you will be asked to enter a user name and password. The username and password accounts have been setup by your system administrator. Please contact your manager or your system administrator if you need to know your username and password.

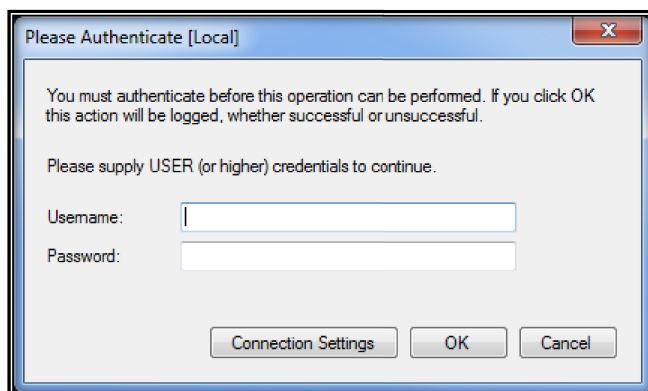


Figure 3 - Logging in

4.1 Levels of user access

There are three levels of user access permissions: User, Supervisor, and Administrator. Depending on your position in the company, you may have a username with access permissions at either User or Supervisor level. If you have user permissions, you will be able to see the status of the electric fences and any alarms that have occurred, and you will have been given instructions from the site managers on what actions you should take if any alarm occurs. Supervisor access permissions are required to arm / disarm the electric fences and close any alarms that may have occurred.

If JVA Perimeter Patrol is logged in as a user with low access permissions and you request an action that requires higher permission, JVA Perimeter Patrol will give you an opportunity to enter high access permission credentials for that single action. In the image below, the user tried to open System Configuration but was blocked with a request for Administrator Credentials.

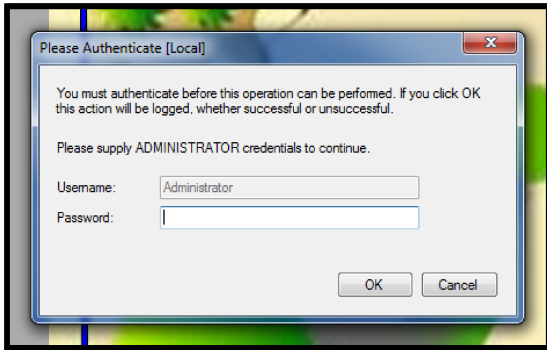


Figure 4 - Enter higher access permissions credentials

4.2 Login as a different user

Sometimes you may need to login as a different user. You can do so by clicking **File** → **Login as a different user**.

- Administrators, be sure to use this utility to login as a user with lower access permissions when you have finished configuring JVA Perimeter Patrol.
- Supervisors, when you leave a person with less authority in charge of JVA Perimeter Patrol, be sure to change your login to a suitable level for the person who you are leaving in charge of JVA Perimeter Patrol.

Table 1 - Summary of user access permission levels

	Users	Supervisors	Administrators
View zone voltages and alarms	✓	✓	✓
Control energisers		✓	✓
Close resolved alarms		✓	✓
Exit full screen mode		✓	✓
System Configuration			✓

5 JVA Perimeter Patrol display overview

The program overview image below shows what you might see when you first login to JVA Perimeter Patrol.

On the left you will see a table containing rows of named electric fence zones. The column on the left has the name of the zone, and the column on the right shows the voltage that is currently being measured on the fence. The colour of each row corresponds to the status of the zone. You can see a **Legend** toolbar at the bottom of the screen that tells you what each colour means.

On the right, you will see a large map of the site you are monitoring. Drawn on the map are lines showing the location of the fence for each zone. In the example below, the “East sector” zone is represented by the red line on the right of the map going from top to bottom. You can tell from the legend that red colour means the zone has an alarm.

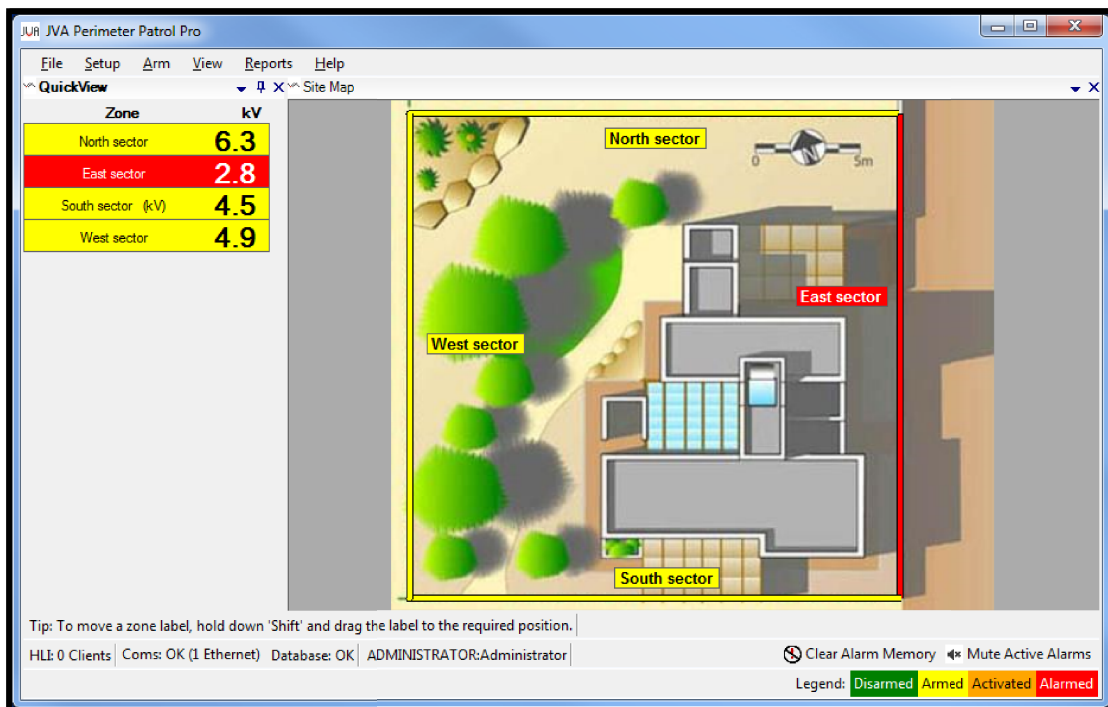


Figure 5 - Program overview

6 Extended Zone Information

Sometimes you will need to get more information about an individual zone. To get this extended information, click on the Zone name in the zone table on the left, or on the name of the zone in the Site Map. When you do, an extended zone information window like the one shown below will appear.

At the top left of the extended zone status popup window is the status of the zone displayed in large bold text. Below it is a list of the possible alarms that can happen for the zone. In the example on the left, all the alarm labels are green, meaning they are not active. The example shown below on the right, however, shows that its zone has an active Fence alarm.

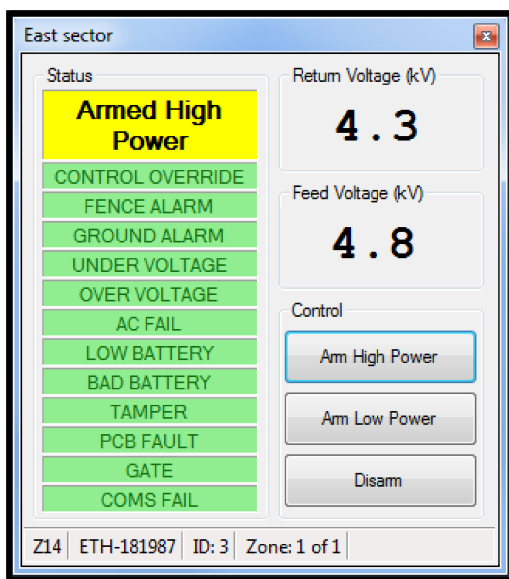


Figure 6 - Extended zone information

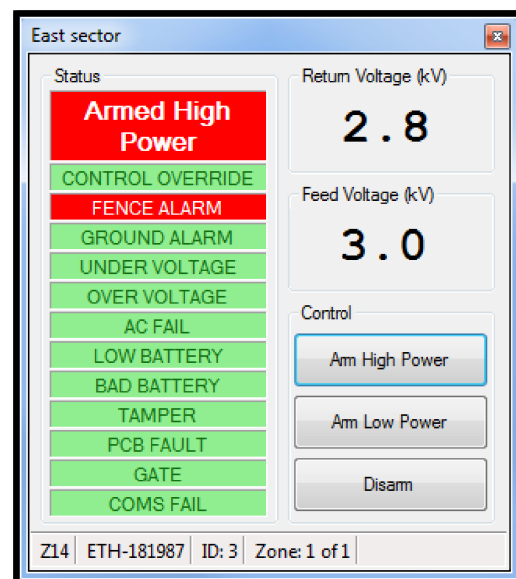


Figure 7 - Extended zone information showing an alarm

On the right of the extended zone status popup window is a report for the fence voltage, and buttons that will allow you to arm or disarm the energiser if your login access permissions are Supervisor or higher.

At the bottom of the extended zone status popup window are a few fields that you may be asked to report to your supervisor if someone is trying to solve a problem on the fence.

- The first field, "Z14" is the type of energiser that is powering the zone.
- The second field, "ETH-181987" is the network name of the Ethernet Adapter that connects the energiser to JVA Perimeter Patrol.
- The third field, "ID: 3" is the Keypad Bus Id of the energiser.
- The fourth field, "Zone: 1 of 1" is there because a single energiser device can power more than one zone. Here you can find out which zone on the energiser you are actually seeing the status of.

7 How to control the energisers

You can control individual energiser zones using the extended zone status popup window in that we explained in the section above.

If you have supervisor access permissions or above, you may also control all of the energisers at the same time using the commands shown below. You will see “Arm High Power All” and “Arm Lower Power All”, which allow you to make all of the zones operate at high or low power settings. The “Disarm All” command switches all of the zones off.

7.1 Control on Schedule

Versions	Lite	x	Pro	✓
----------	------	---	-----	---

There is a special command, however, that you should take careful note of. This special command is the **Control on Schedule** command. Some system administrators setup JVA Perimeter Patrol with a weekly schedule to arm and disarm the electric fence energisers at certain times. For example, the schedule may power up the zones at night, but keep them disarmed during the day.

When you select this command, JVA Perimeter Patrol will power the energisers according to the schedule, and you won't be able to send any other commands to the energisers. If there is a special reason for you to override the schedule, you will have to click this command again to disable it. Then JVA Perimeter Patrol will allow you to arm and disarm the zones as you wish. Do be careful to turn on the **Control on Schedule** command again when you are finished.

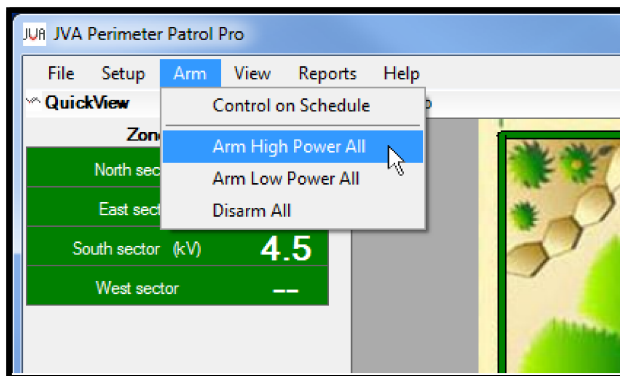


Figure 8 - Controlling all of the energisers at the same time

8 What to do when an alarm occurs

You will know when an alarm has occurred, because JVA Perimeter Patrol will be sounding a loud siren, and the zones will take on a colour corresponding to the alarm state shown in the “Legend” toolbar below.

8.1 Muting alarms

After you have become aware of an alarm and there is no more need for the siren to sound, you may like to turn off the siren. You can do this by clicking the **Mute Active Alarms** button found at the bottom of Perimeter Patrol and shown in the picture below.

8.2 Closing alarms

While you can mute alarms that are active, you cannot close them. You can only close alarms when the condition causing the alarm has gone away. In JVA Perimeter Patrol language, an alarm is called “resolved” when the condition causing the alarm has gone away.

Some alarms can resolve themselves. Others, by design, are **latching** alarms, which means the user has to resolve them manually. To manually resolve latching alarms, you must click the **Clear Alarm Memory** button which you can find next to the **Mute Active Alarms** button. Another way to resolve a latching alarm is to disarm and rearm the zone that it relates to.



Figure 9 - The “Clear Alarm Memory” and “Mute Active Alarms” button

After an alarm is resolved, you can close it. **In fact, it’s important that you close the resolved alarms, especially if you have muted them, because JVA Perimeter Patrol doesn’t restart the alarm sirens and other warning systems for an alarm that you have muted unless you have also closed it.**

To see a list of alarms, click **Reports → Event Log**. The event log window will open as illustrated below.

The event log window has a top and bottom section. The top section is for open alarms. The bottom section is more like an event log listing a history all the things that have happened to JVA Perimeter Patrol.

You can select an alarm in the top section by clicking the little space to the left of the row representing the alarm. When you have selected it, you can press the **Close Selected Resolved Alarms** button to close the alarm. When you do, you will be asked to enter a note

with details about the alarm. It's important that you provide as much detail as possible about the conditions causing the alarm and how it was fixed.

Remember that you can't close an alarm that hasn't been resolved, and you have to manually resolve some alarms by clicking the **Clear Alarm Memory** button at the bottom of Perimeter Patrol.

Use the **Export to CSV** button to make JVA Perimeter Patrol create and save a file with all the current event log information. You may be asked to export a file and email it to your supervisor.

Special note: The **Force Close Selected Alarms** button is for special cases when an alarm is generated by a zone that your system administrator later deleted. Even though the zone was deleted, the alarm remains in the system and must be cleared. Using this button to clear the 'left over' alarms requires administrator access permission.

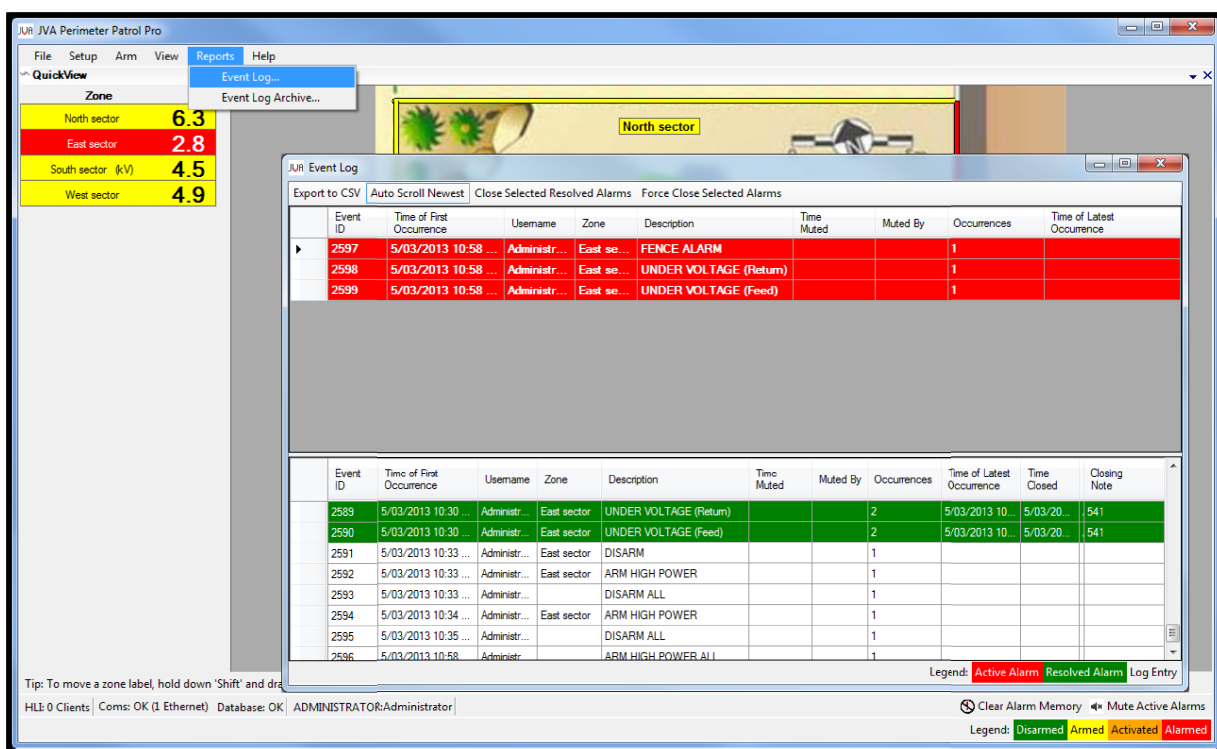


Figure 10 - Viewing open alarms and the event log

8.3 Alarm emails

Versions Lite ✓ Pro ✓

Your system administrator may have configured Perimeter Patrol to send emails whenever an alarm occurs.

9 Event Log Archive

Versions Lite *x* Pro ✓

The Event Log archive is a way for you to view all the alarms and events that happened in the past.

Click **Reports** → **Event Log Archive** to make the Event Log Archive window appear.

Select the month and year that you want to view events for and click **Show**. You can export the results if you wish by clicking the **Export to CSV** button.

Most of the events are black on a white background. The events that correspond to old alarms, however, are highlighted in green so that you can find them easily.

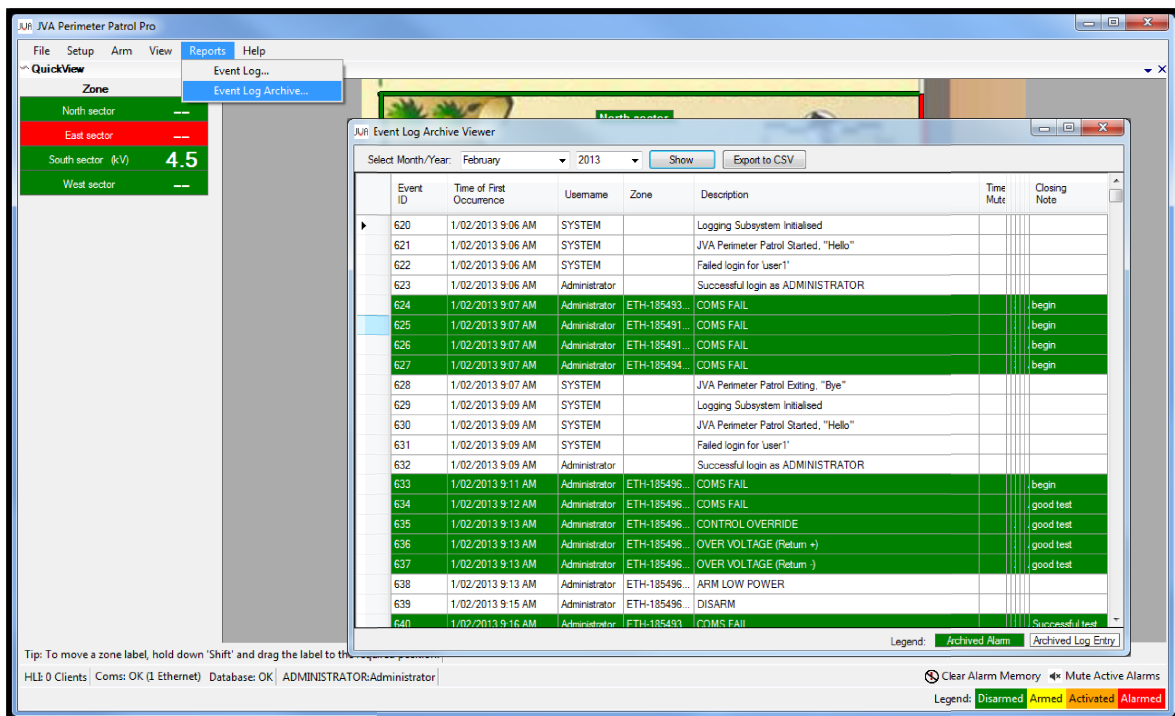


Figure 11 - Event log archive viewer

10 The System Controller

Versions	<i>Lite</i>	<i>x</i>	Pro	✓
-----------------	-------------	----------	------------	---

The System Controller is useful quick-view window that you may like to use as a fast and convenient way to monitor and control the zones.

To open it, click **View → System Controller**.

Each zone in the security system is represented as a row in the System Controller window, shown in the image below. The name of the zone appears on the left of the row, and the three control buttons beside each zone name allow you to Arm and Disarm the zones.

To the right of the control buttons are displayed the “Zone Status” and the voltages that are being measured on each zone. Some zones measure more than one voltage. In the image below, one zone is “Armed low” which means it is armed at low power. Two zones are “Armed High”, which means they are armed at high power. One zone is “Disarmed”, which means that it is switched off.

Finally, the green lights to the right of the System Controller window represent possible alarm states for each zone. If an alarm state becomes active, it will change colour from green to red. Not all possible alarm states are shown, because this is just quick view utility. For example, a zone could be in an alarm state with an active “Gate” alarm, which is not represented in this quick view window.

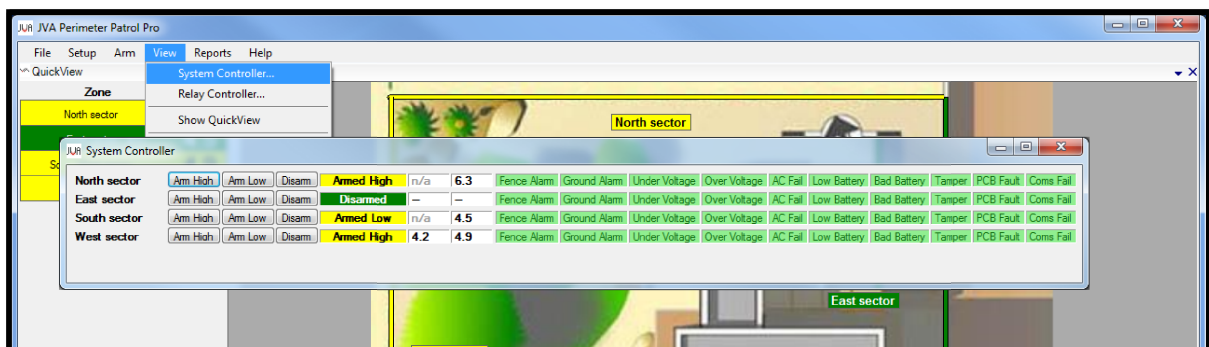


Figure 12 - The System Controller window

11 The Relay Controller

Versions	Lite	x	Pro	✓
-----------------	------	---	-----	---

A relay output is an output that can do signalling or activate other electronic equipment. Relay outputs only have two values; they can be either on or off. Relay outputs can be used for a range of purposes from activating equipment such as a siren, or signalling other devices in your security system.

The number of relay outputs any zone has will depend on the device that is powering the zone.

If you need to manually control the relay output any device, you can open the Relay Controller window by clicking **View → Relay Controller**.

Click on **Relay Control Enable** to enable relay control for a zone, and then click on a relay output symbol to toggle its state.

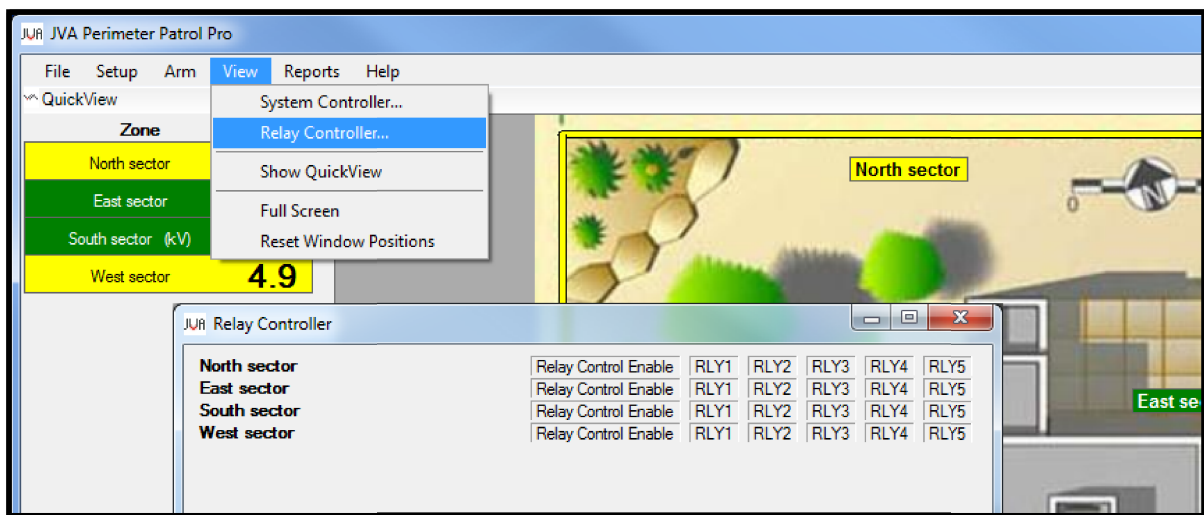


Figure 13 - The Relay Controller window

12 View Fullscreen

Versions *Lite* *x* **Pro** ✓

Click **View** → **Full Screen** to make JVA Perimeter Patrol expand to fill the entire screen and prevent users from doing any other activities on the computer. In some installations, the system administrator will configure JVA Perimeter Patrol to require a password to exit View Full Screen. This helps to secure the JVA Perimeter Patrol system.

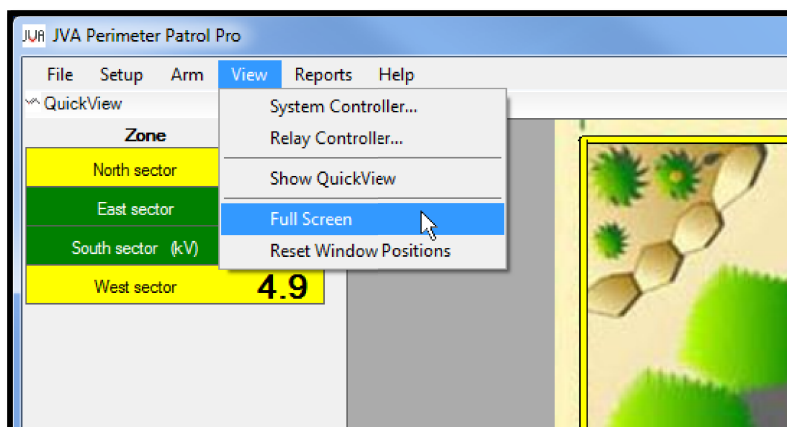


Figure 14 - View Full Screen